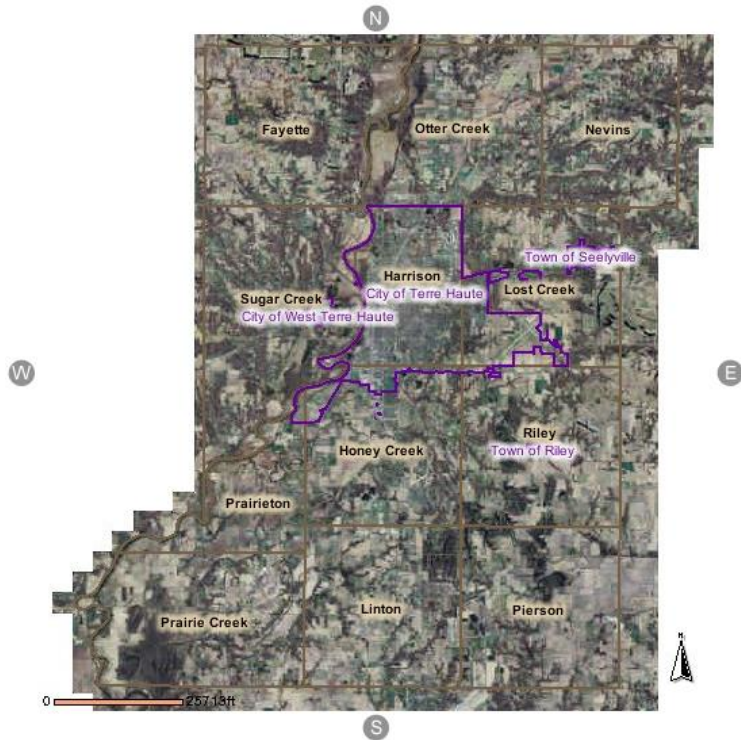




## Press Release

Contact: **Siobhan Casey**  
**Marketing Coordinator, The Schneider Corporation**  
**Phone: 317.826.7170**  
**E-mail: [scasey@schneidercorp.com](mailto:scasey@schneidercorp.com)**

### Schneider Project Wins ACEC Merit Award



INDIANAPOLIS, Ind., February 5, 2008 – The Schneider Corporation was recognized on Saturday with a Merit Award from the American Council of Engineering Companies (ACEC) at the organization’s 2008 Engineering Excellence Awards program. Schneider was recognized for work in 2007 when Schneider was contracted by Vigo County and the City of Terre Haute to provide geospatial information system (GIS) services that would be beneficial for both Vigo County and Terre Haute by helping local governments to save money and better utilize resources.

To create the GIS, Schneider used the combination of GIS technology, digital orthophotography and LiDAR. The first step was to develop an accurate rendition of Vigo County and the elevation of the land. This rendition was

then used as the anchor to place the land ownership and utility information from the thousands of documents including tax roll data, old paper maps, as-builts and deeds.

The unique partnership between the City and County enabled each community to develop a stronger system by pulling together resources. This partnership allowed the City and County to easily gain access and to vital information in an easy, fast and relevant fashion.

“This project was a unique opportunity for Schneider to be a part of,” said Jeff Corns, Schneider’s Vice President of GIS. “A City and County working together to develop a GIS is a great example of better government. We were excited to help facilitate that collaboration.”

Schneider also developed an online portal for the citizens of Vigo County and Terre Haute. Beacon™ (<http://beacon.schneidercorp.com/>) is a freely accessible web portal online 24 hours a day 7 days a week. Utilizing Schneider's beacon™ solution, citizens can view their property information as well as utilize the Citizen Action Center which allows them, for example, to pinpoint the location of a broken sidewalk or another item that needs attention from the City. This information is sent directly to the proper department in the City for remediation.

The online portal offers clients a series of training courses, tips & tricks, guides & manuals, downloads, and much more. With basecamp, all this information is easily accessible and will allow GIS professionals to continually advance their knowledge of how to better utilize GIS technology.

### ***About The Schneider Corporation***

***Founded in 1962 and headquartered in Indianapolis, Ind., The Schneider Corporation is a full-service national engineering firm. The company is a third-generation, family-owned company, serving a range of clients with eight offices and over 300 professionals. Schneider applies professional expertise and sophisticated technology in the areas of Engineering, Geographic Information Systems (GIS), and Land Surveying to collect, create, and manage vital information for clients in both the private and public sectors. For more information about our GIS services, please visit <http://gis.schneidercorp.com>.***

###